

# Industry capacity grows thanks to **HORN** projects

Global glassmakers expanded capacity and sustainability efforts as HORN delivered advanced furnaces, critical reconstructions and precision repairs across multiple continents. HORN strengthened regional manufacturing, accelerated low-carbon melting technologies and enabled customers to modernise production, illustrating a cohesive industry-wide shift toward efficiency, electrification and resilient furnace lifecycle management.

**R** **ECONSTRUCTION** HORN has successfully reconstructed a regenerative end fired furnace at PGP Glass' Kosamba plant in India. The 60-tonnes-per-day unit, designed for cosmetics and perfumery bottles, was restored on schedule and produced first glass on 16 July 2025. Expert supervision by the German company and by HORN India ensured a smooth restart, consolidating an existing reputation for extending furnace life cycles while improving operational reliability - an expertise that's echoed across HORN's global project portfolio.





## EXPANSION

Complementing these lifecycle improvements, the company launched a new 170-tonnes-per-day end fired furnace for Sichuan Skyhorse Glass in Shehong, China. Featuring a 101m<sup>2</sup> melting surface and six lines for super flint production, it integrates the company's newest low-CO<sub>2</sub> technology. First glass was achieved on 21 August under the joint supervision of HORN and its Beijing subsidiary. This expansion demonstrates the same commitment to sustainable, high-efficiency melting seen in HORN's work with PGP and other partners.

## SCALE-UP

Moving to Brazil, the company further showcased scalable innovation by commissioning Ambev's 400-tonnes-per-day regenerative furnace. Equipped for flint, amber and green glass while using electricity from zero up to 20 percent with HORN e-fusion power boosting, the project exemplifies the strength of HORN in boosting systems. As turnkey supplier, the company provided full technological integration -from refractories and steelworks to commissioning and training- paralleling the comprehensive support provided in India and China.

## PIONEERING

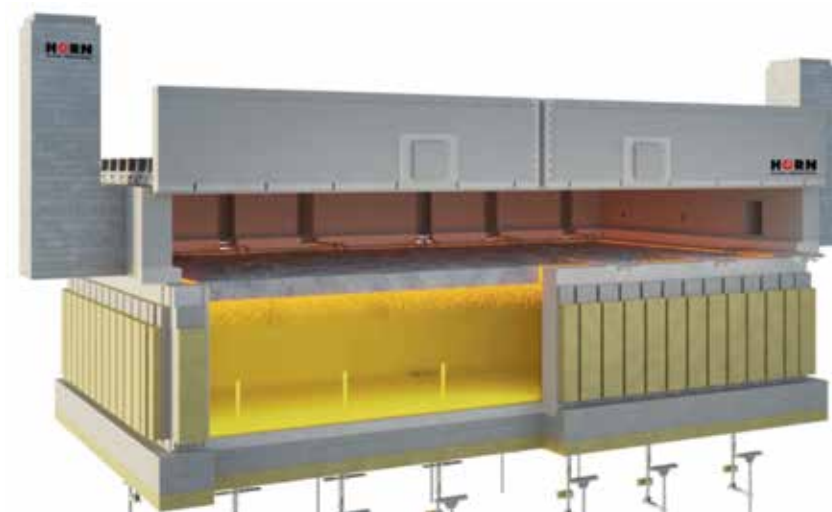
Also, Reinforcing regional capability building, HORN completed a greenfield project for SNJ

India Glasses in Tamil Nadu: the state's first-ever container glass furnace. The 230-tonnes-per-day end-fired design, with three production lines for flint, green

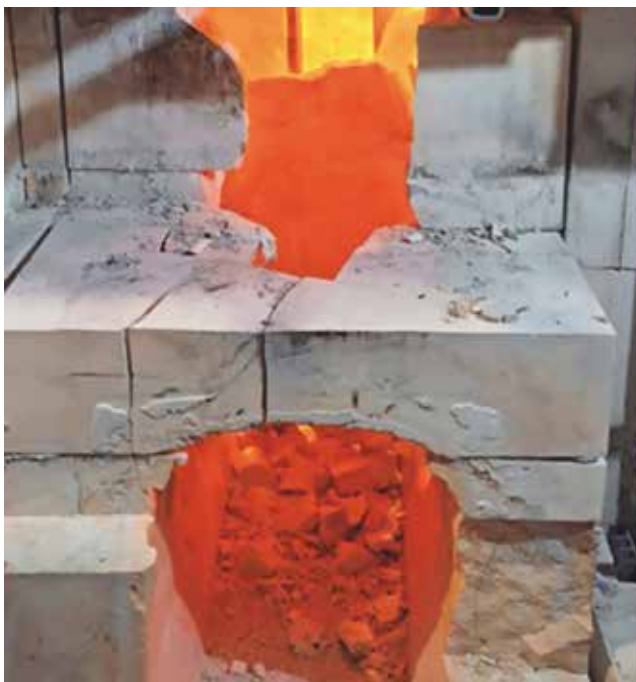
and amber, marks a significant step in decentralising India's glass production footprint. This pioneering project aligns with the broader trend seen in Ambev's and Skyhorse's expansions: increasing local autonomy supported by the company's technology.

## ELECTRIFICATION

Advancing the future of low-emission melting, HORN is also delivering an all-electric furnace to Shandong Linuo Pharmaceutical Packaging. The 70-tonnes-per-day furnace,



## MOMENTUM



enhanced with HORN e-Fusion power boosting systems, focuses on neutral flint production for pharmaceutical packaging. Its fully-electric design deepens the sustainability trajectory already reflected in Skyhorse's low-CO<sub>2</sub> furnace and Ambev's flexible boosted furnace, positioning the company at the forefront of decarbonised glass melting.

### TRANSITION

The German glass furnace manufacturer is also helping the glass industry transition from fossil fuel to electric furnace heating. HORN built an oxygen hybrid furnace with up to 50% electric heating for the German glass manufacturer Gerresheimer. Equipped with

state-of-the-art heating systems and HORN E-Fusion Power Boosting, the new melting furnace achieves up to 40% lower CO<sub>2</sub> emissions compared to conventional technology.

### PRECISIO REPAIR

Moving on to Ritzenhoff in Germany, HORN Bau & Service GmbH executed a complex hot repair within a whopping 21 days - rebuilding the doghouse palisades, including the corners, and plated various other critical areas. After a controlled drain. Around-the-clock coordination, endoscopic inspections and meticulous sequencing ensured rapid return to production. This project exemplifies the company's holistic approach to furnace

lifecycle management -from new-build electrification to end-of-life reconstruction- creating continuity between global innovations and local operational resilience.

### IN SUM

Across all these, namely reconstructions, expansions, electrification projects and precision repairs, a single narrative becomes clear: glass producers worldwide are modernising rapidly and HORN is a unifying force enabling that transition. By delivering sustainability-driven designs, extending furnace longevity and strengthening regional production ecosystems, the company is helping shape a more efficient, lower-carbon and globally-connected glass industry. ■



Throat after  
Example photo

**HORN**  
GLASS INDUSTRIES

**HORN GLASS  
INDUSTRIES AG**

Bergstraße 2  
95703 Plößberg  
GERMANY  
Tel.: +49-0-9636-9204-0  
info@HORNglas.de  
[www.HORNglass.com](http://www.HORNglass.com)

# GLASS Week

SAVE-THE-DATE

# 2026

September 14–17

Glass City Center | Toledo, Ohio

*where the glass manufacturing industry meets*

## 87th GLASS PROBLEMS CONFERENCE



Organized by



GLASS MANUFACTURING  
INDUSTRY COUNCIL



Alfred University  
OUTSIDE of ORDINARY

[gmic.org/glass-problems-conference](http://gmic.org/glass-problems-conference)