

## Company Data

### CONTACTS

**KEVIN YUNG** - PRESIDENT & CEO

**BRAD HALL**

CHIEF OPERATIONS OFFICER

**JORDAN BAKER**

CHIEF FINANCIAL OFFICER

**SAM LEAPER**

DIRECTOR OF GLASS BUSINESS  
DEVELOPMENT

### TURNOVER FROM GLASS

90%

### SALES

Domestic: 50% - International: 50%

### ANNUAL COMPANY TURNOVER

EUR 100 million

### EMPLOYEES

60 plus

### COMPANY FOUNDED

1947

## Product Range

- **TURNKEY EPC PROJECTS**
- **MELTING FURNACES**
- **TIN BATHS**
- **DESIGN & ENGINEERING**
- **CONSTRUCTION SERVICES**
- **PROJECT MANAGEMENT**
- **AUDITS & MAINTENANCE**

A global leader in EPC (engineering, procurement, and construction) contracting, HFT focuses on providing comprehensive, reliable project solutions for all sectors of the glass market. The com-



pany's expertise includes design-build of new greenfield facilities, redevelopment and modernization/upgrades of existing sites, cold repairs, as well as other project solutions. HFT supports all stages of a project – from project feasibility reviews, initial concept-development and securing of financing options, to preconstruction, to equipment and materials procurement, to design-build general contracting, project management and project execution.

HFT's expert glass team offers a combined 500+ years of experience in designing and building glass manufacturing facilities and process lines. With more than \$13.7 billion in installed value across 47 countries, and more than 300 EPC projects completed worldwide, the company takes great pride in its reputation and will continue improving and innovating to align with evolving client expectations.

HFT has the experience and expertise to support glass makers in the following areas:

### Turnkey glass plants:

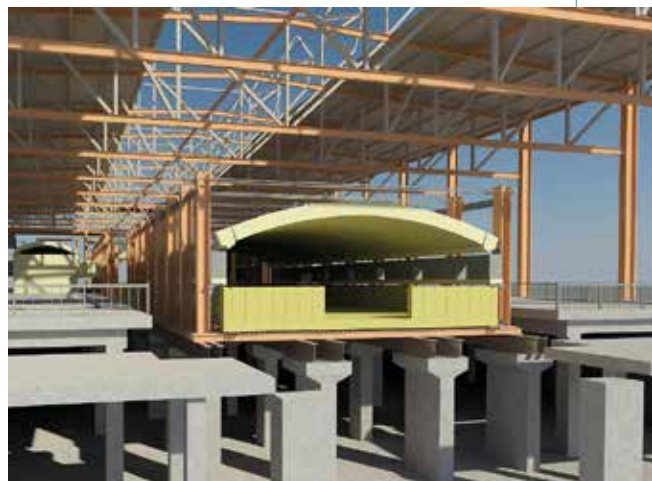
Turnkey glass plants for manufacturing high quality float glass, solar glass, container glass, fiberglass, tableware,

sodium silicate, and other specialty glass with an EPC(M) approach. This includes all process areas from raw material reception to packaging, as well as buildings, utilities and infrastructure.

**Melting furnaces:** Up to 1,200 MTPD for melting a wide range of float glass, solar glass, container glass, fiberglass, tableware, pharmaceutical products, as well as sodium silicate and other specialty glass applications. Available as end-port or side port designs for gas/air firing, oxy-fuel and hybrid.

**Float glass tin bath:** Narrow and wide configurations available. This includes tin bath automation and fully automatic top roll machines.

**Cold repairs and plant modernization:** The engineering and construction teams of HFT continue to meet the reducing turn-around time schedules for float, container, fiberglass, tableware, sodium silicate, foam glass and other specialty glass producers around the world. Providing state-of-the-art engineering design, achieving optimum energy efficiency and meeting even the strictest of environmental constraints. HFT's commitment to its customers is consistent in the delivery of projects where quality, efficiency and safety are paramount.



3009 Washington Road - McMurray, PA 15317 - USA

Tel: +1 - 724 - 9419550 - E-mail: [info@hft.com](mailto:info@hft.com) - [www.hft.com](http://www.hft.com)