



OPTRIS GMBH & CO. KG

Ferdinand-Buisson-Str. 14 - 13127 Berlin - Germany - Tel.: +49-(0)30-500 197 0

E-mail: sales@optris.com • www.optris.com

COMPANY DATA

Contacts

Sascha Kienitz - General Manager

Torsten Czech - Head of Marketing

Ingo Stahlkopf - Head of Sales

Number of Employees

115

Company founded

2003

Planned Exhibitions 2025

China Glass - Beijing, China - 22 / 29 May

Glass Build America - Orlando, (FL) USA - 04 / 06 November

SALES NETWORK

OPTRIS HEADQUARTERS

Optris GmbH & Co. KG

Ferdinand-Buisson-Str. 14 - 13127 Berlin, Germany

Tel.: +49 30-500 197-0

sales@optris.com - www.optris.com

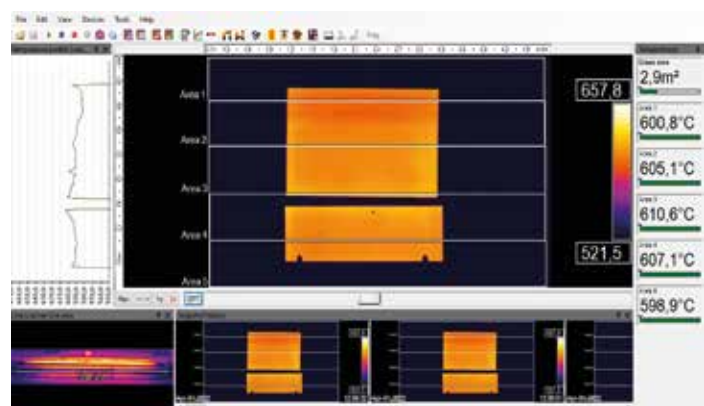
USA

Optris Infrared Sensing

200 International Drive, Suite 130, Portsmouth, NH 03801 USA

Tel.: +1-603 766-6060

sales@optris-ir.com - www.optris.com



Thermal image of monitoring temperatures of glass sheets

COMPANY PROFILE

Optris is and has been, one of the leading innovative companies in the field of non-contact temperature measurement by means of infrared radiation since its establishment in 2003. The company's product range covers fixed industrial thermometers, infrared cameras, as well as accessories.

TRADITION AND INNOVATION

Thanks to their extensive know-how and innovative concepts, our experienced engineers and physicists continuously inspire with outstanding solutions.

TOP QUALITY AT REASONABLE PRICES

We provide cutting-edge infrared technology. Cost advantages arising from bulk purchasing of semiconductor products and from the production process are passed directly on to our customers.

PROCESS OPTIMIZATION VIA TEMPERATURE MONITORING

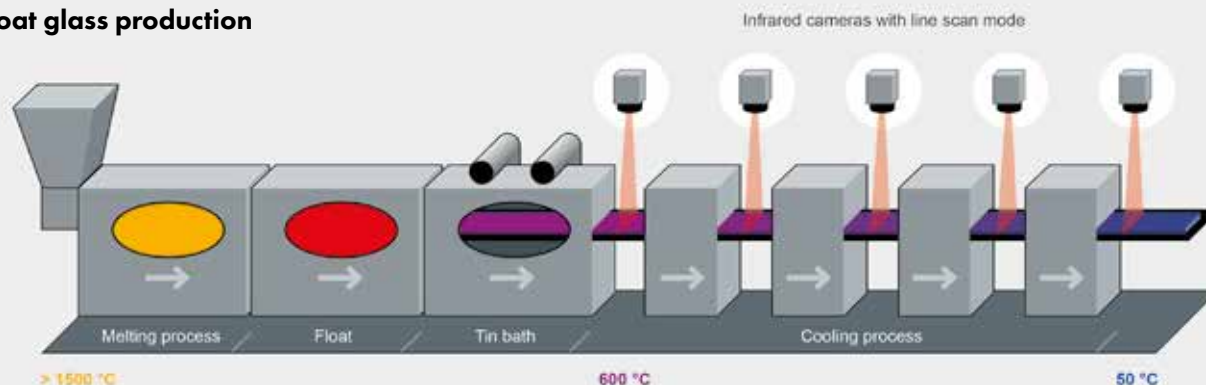
In many manufacturing processes (e.g. the glass industry), product and process temperatures are important physical variables. Non-contact temperature measurement with Optris sensors and thermal imaging cameras ensures high production line quality standards.

In order to ensure the highest level of quality, the glass industry and its energy-intensive production process relies on dependable means of temperature monitoring.

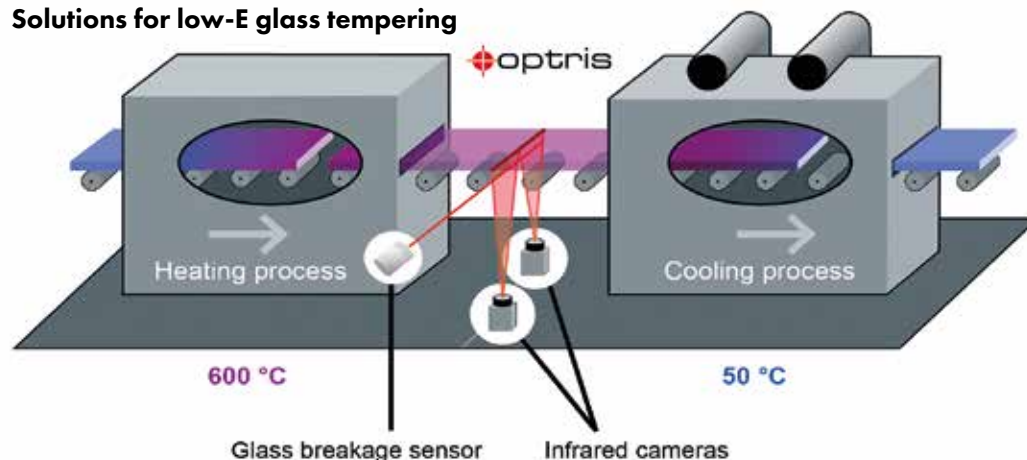
Our glass thermometers and IR cameras are optimally suited to non-contact temperature measurement of glass surfaces and use innovative double lasers to indicate the exact measurement spot.

All kinds of glass, coated and uncoated, change their emissivity behavior in dependency of the angle of view. Especially low-E coatings show an unusual behavior. The new Bottom Up Glass inspection system solves this problem by having two infrared imagers installed underneath the tempering line which measure the temperature on the non-coated high emissivity side of the glass.

Measurement areas at float glass production



Solutions for low-E glass tempering



mal treatment, which is ensured by the application of the correct temperature measurement technology.

Ensuring the quality of laminated safety glass

Laminated safety glass (LSG) consists of at least two flat panes of glass, which are laminated in a clean room with a sheet of PVB film between them. The temperature of the film can be monitored with infrared

Single-pane safety glass production with correct temperature measurement technology

For the production of single-pane safety glass (SPSG), the cut and processed flat glass is heated in a furnace under continuous movement at over 600°C. During the transport of the heated glass in the pretension zone, an infrared camera monitors the temperature distribution on the glass surface in line scan mode. Inhomogeneities can thus be compensated during the tempering process, in which the glass is air-cooled. The quality of the SPSG mainly depends on a homogeneous ther-

ermometers. In the pre-heating furnace, the glass panes are heated in order to melt the film and simultaneously press the "sandwich" together, to prevent air pockets. During the transition to the autoclaves, the temperature distribution is monitored with an infrared camera, in order to adjust the heating elements in the pre-lamination furnace for subsequent panes, when necessary.

Measurement areas at LSG production

