



## HORN GLASS INDUSTRIES AG

Bergstrasse 2 - D-95703 Plössberg - Germany - Tel: +49-9636-92040

E-mail: [info@hornglas.de](mailto:info@hornglas.de) • [www.hornglass.com](http://www.hornglass.com)

### COMPANY DATA

#### Contacts

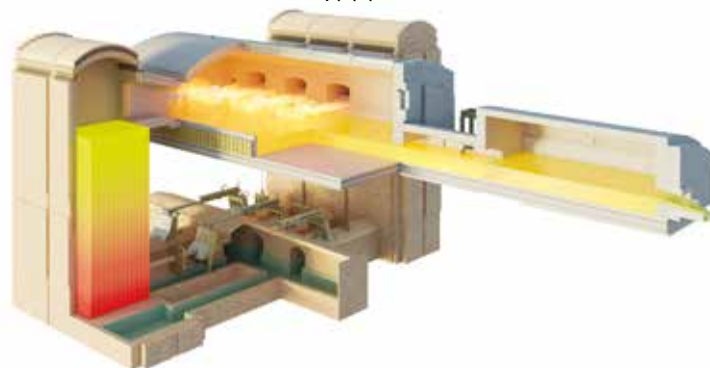
**Stephan Meindl** - President and CEO  
**Ekaterina Firsova** - Executive Director Glass Plant Technology  
**Ulrich Imhof** - Executive Director Container/Special Glass  
**Andreas Kopp** - Managing Director HORN Bau & Service GmbH

#### Number of Employees

Approx. 475 (worldwide)

#### Company founded

1999





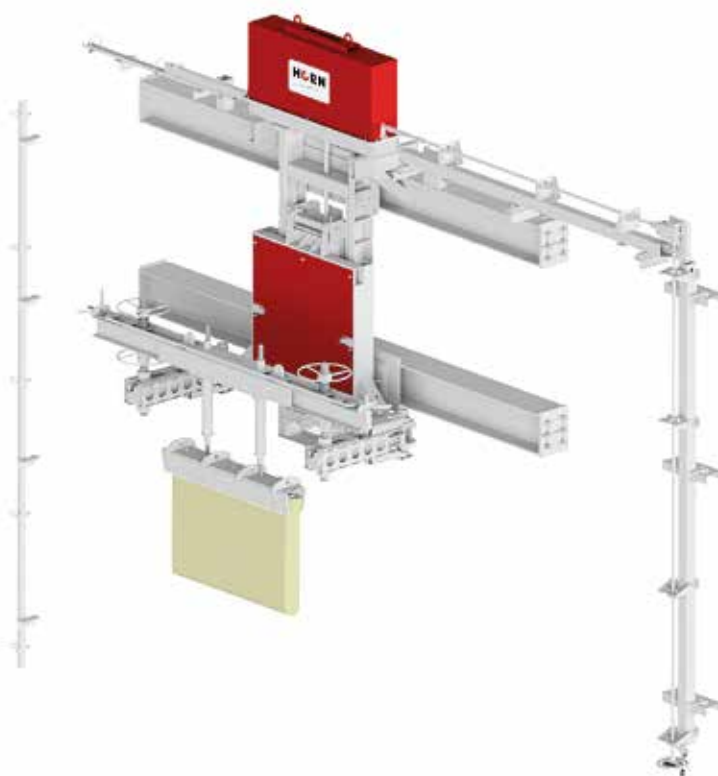
## COMPANY PROFILE

At its location in Plößberg, Germany, **HORN Glass Industries AG** designs and makes glass melting technology and turnkey projects for the float and container glass industries. The company's high-performance glass melting furnaces and turnkey projects are installed at glass manufacturers all over the world and serve the production of beverage bottles, food containers, drinking glasses, glass panes, glass tubes, glass fibres and special glass.

With more than 140 years of experience, HORN has been the specialist and expert in the field of the construction of glass melting furnaces for many years, and is now one of the industry leaders in the implementation of turnkey projects.

Subsidiary companies in China, Malaysia, India, Croatia, Ukraine, Brazil and the Czech Republic add value to global customers, offering proximity and prompt response in the global market. Almost 90% of HORN's products are exported from Plößberg in Upper Palatinate to more than 75 countries worldwide.

HORN offers its customers complete support and a helping hand at all times. HORN can offer tailor-made solutions because we have a very high level of vertical integration for all our products. HORN has ventured into unknown areas, e.g. in the construction of its own tin baths and associated equipment. HORN manufactures a large number of products in its workshops in Plößberg:



- Glass melting furnaces (container glass, float glass, etc.)
- Tin baths
- Batch chargers
- Stirrers
- Gas, oil and heavy oil heating for melting furnaces
- Tin bath equipment such as top roller, pusher, flags, fences
- Tweel
- Dross boxes
- Shield gas supply stations

## PRODUCT RANGE

**MELTING FURNACES**  
**TURNKEY TECHNOLOGICAL**  
**PLANTS**  
**PROJECT ENGINEERING**  
**FINANCING & AUTHORISATIONS**  
**PROJECT MANAGEMENT ON SITE**  
**TRAINING**  
**OPERATIONAL SUPPORT**

**TIN BATHS**  
**HEATING EQUIPMENT**  
**CONTROL EQUIPMENT**  
**ELECTRIC BOOSTING SYSTEMS**  
**BATCH CHARGERS**  
**MEDIA SUPPLY EQUIPMENT**  
**SERVICE WORKS**  
**FOREHEARTHES**