

Super support to **EVALAM** customers by architectural department



After over three years of EVALAM advising clients to optimize projects in structural calculations that may require their know-how, the company recently affirmed how guaranteeing success as a differential value is among its core values.

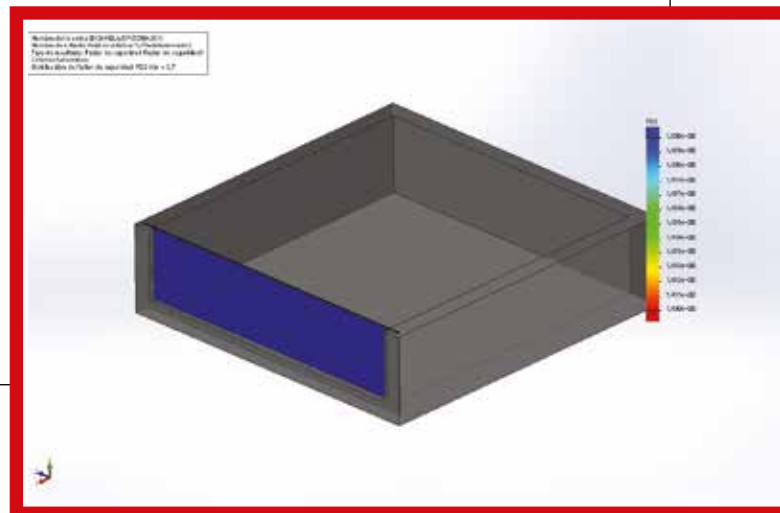
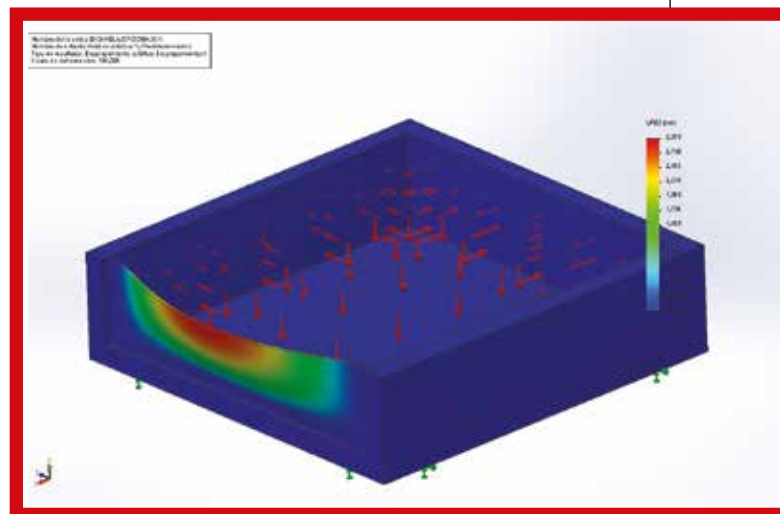
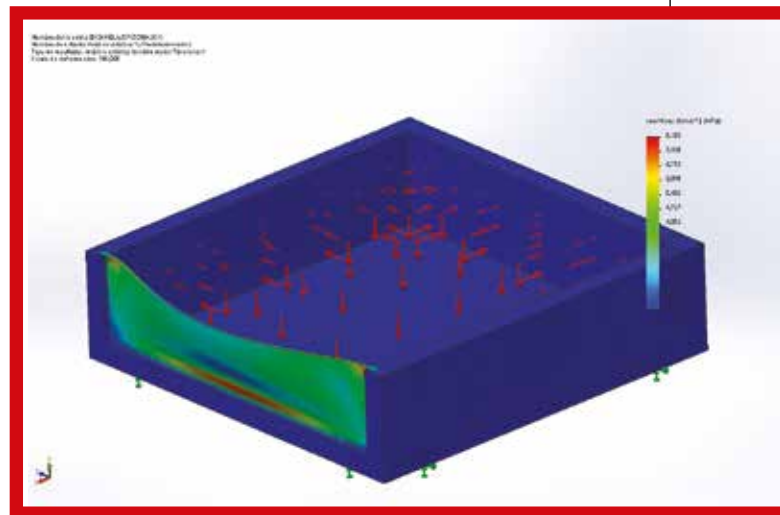
Given the current trend towards specialization within the glass market, industry professionals are pushed to get smart on ways to reliably answer the needs of architects and prescriptors - both of whom set new challenges each day. Unlike former years, purchasing an interlayer and installing laminated glass will hardly suffice today. Instead it's become compulsory to be in the know concerning processes, the declaration of performances and certifications - and all staying perfectly abreast of building and construction regulations while, most essentially, being accompanied by a good adviser. Mindful of this reality and invested with the responsibility of being the international reference manufacturer of EVA for architectural use, Evalam is committed to both supporting and accompanying customers - from project beginning to project end.

Indeed as a company that's passionate about challenges, Evalam's proud to help customers get the most from their projects thanks to its extensive knowledge of glass - put daily into practice over three years within the company's Technical Architectural Department, which was exclusively developed

to provide customers with both service support and guidance.

WHATEVER THE SHAPE OR DESIGN ...

Faithful to Evalam's motto 'no limits in glass creation', the Technical Architectural Department considers each project independently - regardless of shape, design or measurements. As a differential service it works to find the most appropriate solution, offering the calculation to justify glass compositions while guaranteeing their service suitability. Based upon tests performed to determine the mechanical properties offered by the company's products (Evalam Visual, Evalam N-Fluent & AB-AR), it's possible to simulate stresses to which the glass is subjected in each of the applications defined by the customer - thus being equipped to advise on the best glass composition to manufacture. The client receives a detailed and personalized report with the results of the static analysis, carried out using finite element analysis software (FEA), where stresses, deformations and safety factors resulting from the study generated by the efforts contemplated in it are all observed. Follow-





ing analysis of each layer comprising the final glass, thicknesses that meet the requirements established by the client are verified - providing an optimum solution for their application. In short, it is about guaranteeing project safety with a correct dimensioning of the glass thicknesses that will allow an optimal cost-safety ratio.

Here calculations include a wide range of applications - from glass placed upon walkable floors, walkways and stairs to glass installed in swimming pools.

ACCOMMODATING THE FINAL APPLICATION

Multiple projects exist for different applications, all for which the Evalam Technical Architectural Department has collaborated to define the glass to

be applied with the most peculiar applications being those designed for installation as pool walls. Here the important role played by EVA is important to note where laminated glass is used as a pool wall, given that it's a non-hygroscopic material that will not absorb moisture from the surrounding environment as other products do. Indeed Evalam Visual and Evalam N-Fluent have been specifically developed to offer great humidity resistance - avoiding delaminations generated when the glass is installed open-edged either in extreme weather conditions or unfavourable environments.

Interesting success stories include collaboration and advice carried out in 2020 with Panamanian company Temperbraz, which



was responsible for the transformation of a glass composition using five ultra-clear 10 mm glasses. Four of the internal glasses were tempered and the last was raw in order to brace the others in case of spontaneous breakage. The glasses were laminated with Evalam Visual with a thickness of 1.52 mm between each one. The joints were sealed with transparent structural silicone. During installation, the panels were buried 25 cm deep and supported on a urethane

base - anchored with quick-drying mortar.

Two installations carried out in South Africa also stand out. In both cases, 63 mm thick multi-layered glass was used with panels measuring between 1,200 and 3,200 mm wide, laminated with Evalam Visual. The configuration achieved a beautiful aesthetic quality from all angles, also accentuating the clarity of the pool water. The glasses were laminated in 2021 by the company Phoenix Fenestration and Glass and installed by MacQuatix.





Another was carried out in Brazil in 2022 by Lajeadense, which was responsible for transforming a glass of various layers of 12 mm glass laminated with

Evalam Visual at a thickness of 1.52 mm between each one and dimensions of 3,120 x 555 mm. The architect designed the pool on the terrace with one of



its walls in laminated glass that had to perform the containment functions simultaneously while offering a great superb panoramic vista.

Besides the glass use of laminated applications for swimming pools, the advisory work for applications on walkable floors is worth mentioning - like for the laminated glass walkway made by Luxglass Technology that was installed in 2019 at Hotel RIU Plaza (also known as Edificio España). This completely transparent and safe glass walkway spans a length of 7 metres x 1.8 metres wide and is suspended 117 metres from the ground. It was laminated with AB-AR, a technical solution that offers compositions that are 50 percent lighter than glass-only compositions - obtaining the same resistance, only with added safety. AB-AR is an ideal interlayer for structures of all kinds, whether for use on walkable floors, like in this case, or for glazed facades, stairs, ceilings, railings, and anti-vandalism security situations.

WORKS AVAILABLE IN A REFERENCE BOOK

A part of the work carried out by Evalam's Architectural Technical Department is included in the Evalam reference book, which demonstrates how Evalam helps its customers to develop glass that exhibits optimal features - all while helping to comply with the requirements of comfort, protection and resilience. An example that reflects how Evalam, being more than an EVA manufacturer, is also a highly-prepared adviser that can be counted on to successfully tackle any project.

Evalam

Evalam

Pol. Ind. Penapurreira Parcela C4-B
15320 As Pontes de García Rodríguez - A Coruña - SPAIN
Tel. Barcelona: +34-936 855-672
Fax: +34-936-855-392
E_mail: evalam@evalam.net
www.evalam.net

Pujol Group

PUIJOL GROUP
C/ del Pla
108-110 Sant Feliu del Llobregat
08980 Barcelona - SPAIN
Tel.: +34-936 855-672
Fax: +34-936-855-392
www.pujolgroup.net