

NEPTUN: a wide range of vertical washers

In just few years, NEPTUN has positioned itself among the major players in the glass washing industry, offering the market a wide range of available vertical washers.

Closely following the continuous development of glass products while remaining attentive to market needs, the company's latest four series of washing machines meet all production and investment requirement types.

LV TOP

Starting from the entry level LV Top, built with a solid supporting structure in stainless steel for long-lasting reliability LV Top is an easy-to-use machine that needs only minimal maintenance, having been conceived for those who need efficient washing and drying and do not require automation.

Being among the best and more reliable 'entry level' washers of the market, it's

industrially built with a keen eye to both functional and aesthetic details at budget price. Suitable for small-to-medium size companies or even as a back-up washer for large industries, LV Top is available in 1.6, 2.0 and 2.6 m sizes.

LV EVO

Next in line is the LV Evo, which maintains the simplicity of LV Top while adding a

an elevated level of automation and superior performances with an 80 percent higher working speed. The main characteristics of LV Evo include its complete structure in stainless steel with the base frame in hot-dip galvanized steel, 140 mm diameter brushes with 350 RPM speed (500 RPM with brush inverter option), automatic water quality control and management, and energy and sound reduction function -thanks to ECOSAVE- with precise graphic indication and energy consumption recording. LV Evo also offers a touch screen PLC to manage all functions and optionals. A further possibility of in-line integration with other upstream or downstream machines is afforded (Neptun or other brands). Remote assistance and production data export via

ethernet qualifies this model as Industry 4.0-ready. LV Evo is ideal for CN lines, with 3 ÷ 30 mm workable glass thicknesses, automatically adjustable from the CN control or by means of a thickness sensor. Speed regulation is at 1 ÷ 8 m per minute by inverter. It's ideal for end users of all types that seek automation and reliability with a good production load and is available in 1.6 m Open Top, 2.3 and 2.8 m sizes.

THE WAVE SERIES

For companies needing more intensive processing, Neptun offers the Wave series, which is characterized by a truly robust structure and allows maximal flexibility of configuration while being "Industry 4.0" suitable. Wave can be enriched

LV EVO





WAVE

with several solutions, up to total automation, as well as superior performances with in all fields: output, washing quality, integration in business processes. Wave's main characteristics are the motorization of brushes on top of the machine and the wide range of workable glass thicknesses - up to 80 mm. Wave has an innovative opening frame system for optimal water containment during the washing cycle, according to processed thickness. It's also equipped with a powerful touch screen control unit that has several innovative functions: A-Qual water quality control, an energy saving patented Ecosave system, Smart-Speed for automatic speed management and optimal drying of the glass edge at any given speed, and Night-care for water preheating as well as water tank automatic cleaning and re-filling cycle at night-time.

Glass moves inside the drying section through a touchless belt for perfect drying of the entire surface. This is a good washer for a 'heavy' working cycle, 24/7 and glass dimension. With HD configuration, too, it can handle jumbo sheets of up to 350 Kg/m with 80 mm thickness and it's available in

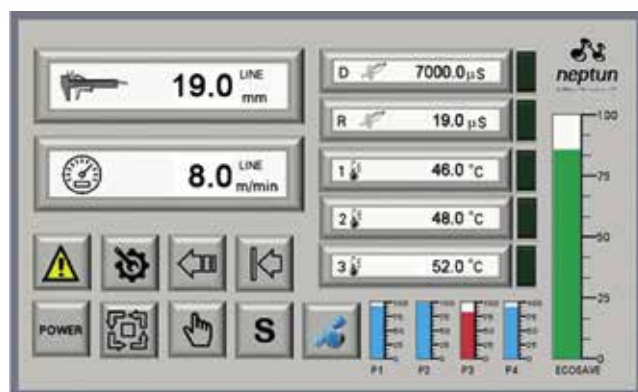
sizes of 2.3, 2.8 and 3.3 m in height.

THE SUPERINOX VERSION

Finally, Neptun offers the fully-optional, top performance Superinox version, which is designed to drive intensive use for customers after an uncompromised cleaning system. With all the above-mentioned features included, Superinox has transport motorization and brushes on top of the machine with a diameter of 180 mm and the possibility to adjust the rotation (RPM) of any single brush with a dedicated motor as well as an inverter to ensure maximum washing efficiency.

A sensor detects low-e glass side and the opening of the first pair of brushes, when supplied with hard bristle – thereby adjusting brush rotation speed accordingly.

Superinox also has a powerful touch screen control unit for machine management, including error diagnostics, scheduled maintenance, water quality and temperature control, as well as production data and energy saving management.



Even though this is a very heavy duty machine, its technical features allow for more specific cleaning performance, such as IG panels, low-e soft coating glasses and ultra-thin glasses up to a minimum thickness of 1.8 mm. It's available in 2.0, 2.6 and 3,3 m sizes.

With more than 90 technical configurations, not to mention its added options, Neptun can indeed offer a suitable solution for any processing type, company size and investment budget.

Neptun Srl



Via Mazzini n. 63 E/F
22070 Rovello Porro (CO) - Italy
Tel.: +39-02-96979011
Fax: +39-02-96754375
E-mail: info@neptunglass.com
www.neptunglass.com

