

ISRA SURFACE VISION

shows its colours at Glasstec

In line with its current strategy to drive transformation through visual intelligence, ISRA SURFACE VISION recently exhibited its latest innovations at this world-leading event for the glass industry - showing how the company's highly-performant inspection system can support glass processing digitalization today.

As Isra Vision's Bertrand Mercier recently noted: "Float glass is enormously important as a base material for countless glass products." The company's Business Unit Manager for Glass then stressed how "the demand for ever higher quality is steadily increasing in such sectors as architecture and electronics - as well as for displays, solar and the automotive industry." Mercier attributed the result of this trend to heightened demand on the one hand - and, on the other, to continuously

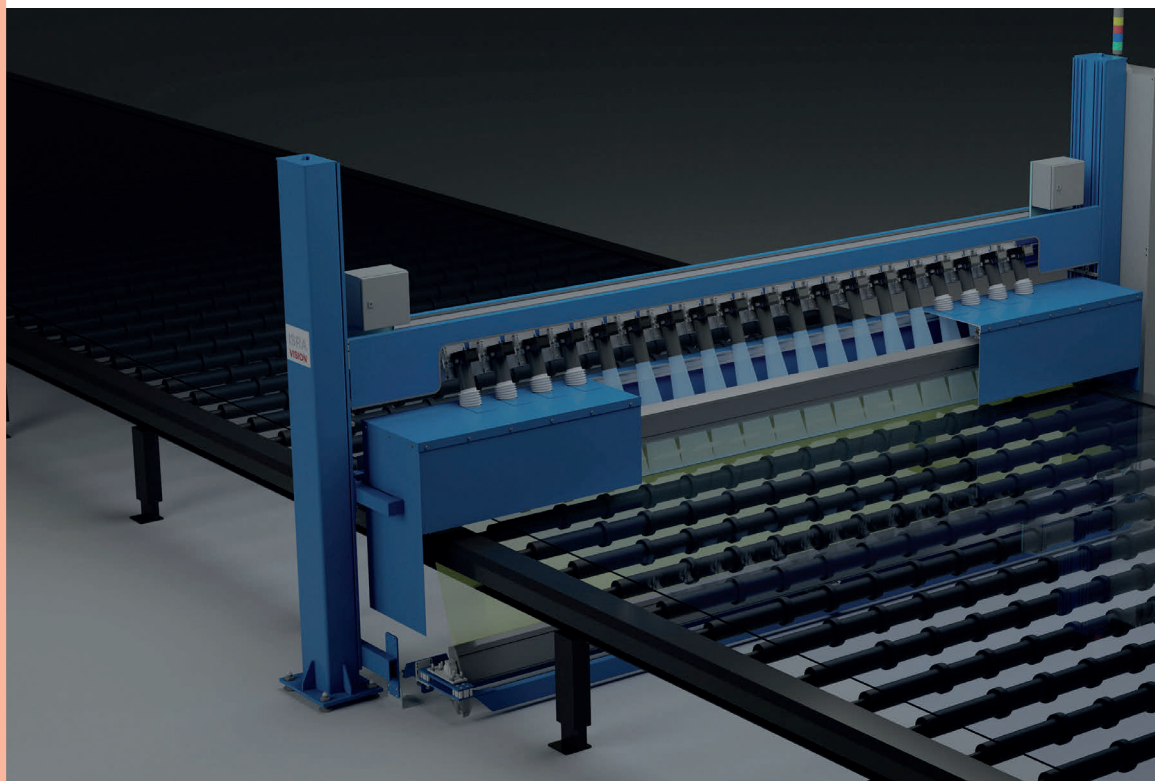
increasing quality requirements.

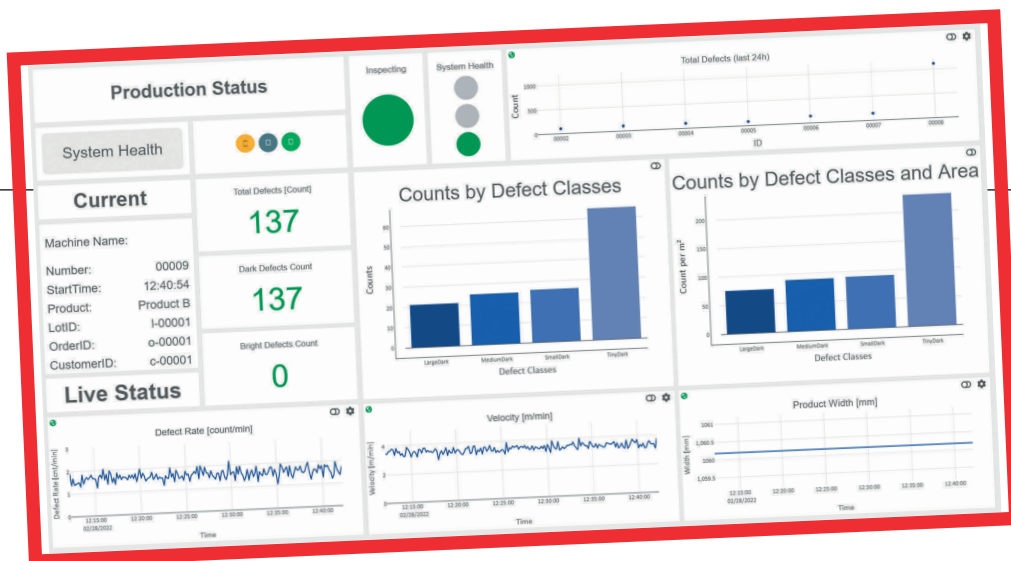
ATTENTION TO QUALITY

By that reasoning, even the first process step plays a decisive role in determining the attainable quality of the final product and here Isra's innovative inspection systems help to achieve a truly high yield whilst simultaneously reducing the company's carbon footprint. As such, its outstanding performance allows for notable optimization between energy consumption and delivered

product quality for value-added applications. Already on the glass ribbon, for example, used filters will assist in enabling a quality grading for final applications (an automotive windshield, for instance).

Quality issues often also occur after lamination or coating, as well as during cutting and grinding. To ensure that only flawless material reaches downstream production, Isra's P2 (PowerPlate) product family helps to detect problems in glass processes already early on - thereby permanently increasing pro-





duction yield. The same applies to, say, the architectural glass sector - which confirms that coatings comply with a given standard. Here P2 systems communicate seamlessly with other aspects along the production chain, like PLCs - all to optimise cutting, sorting and further glass processing/handling whilst providing inspection data to third-party production databases.

Troubleshooting defects in photovoltaic

Company showcasing at Glasstec also included solutions for the ever-demanding solar glass production, given that virtually invisible material defects in the glass for photovoltaic modules can compromise their stability.

The solar market has started to fluctuate across the world; manufacturing costs and solutions that cushion the drop in prices for solar modules are gaining in importance.

EPROMI LIVE PRODUCTION

One way to reduce in-house costs is to expand automation and production insights. EPROMI live is a production management intelligence solution that enables comprehensive monitoring of ongoing processes on the hot and cold end of the float process. EPROMI delivers critical information on three main aspects, namely system health, quality status and process conditions. Indeed this new data platform intelligently combines such data as defect rate, production line speed, illumination, CPU

utilisation and customer-specific parameters - all while presenting the results in clear ^ECOCKPITS that cover multiple sites. These different dashboards provide real-time information to managers on production fundamentals. Not only. Abnormal line parameters can be instantly reported - including proposed actions to remedy the issue reported. This affords users maximum transparency on the current state of their processes -and on the inspection systems themselves- so that possible maintenance windows, too, can be identified and swiftly planned. The benefit of this increased proactive control results in additional hours of effective production.

The EPROMI live production analytics tool monitors the data from Isra Vision's inspection system, allowing

real-time status monitoring- accessed from anywhere without having to install client software. The analysis tool continuously checks the system status and acts as an early warning system to detect upcoming problems.

A Glasstec success story

Whether it was float glass, solar glass, glass processing or production analytics, Isra's presence at Glasstec 2022 offered visitors a deep-dive into the latest technological advancements for innovative new solutions - including ever more comprehensive and reliable quality inspection along the entire production chain.

ISRA Surface Vision

**ISRA
VISION**

Albert Einstein-Allee 36-40
45699 Herten - Germany
Tel.: +49-2366-93000
Fax: +49-2366-9300230
E-mail: info@isravision.com
www.isravision.com

ABOUT ISRA VISION GmbH

With more than 1.200 employees across 25 locations worldwide, Isra Vision is a leading provider of industrial image processing technologies. As part of the Machine Vision division of the Atlas Copco Group, a world-leading provider of sustainable productivity applications, the company offers innovative, intelligent industrial solutions that range from surface inspection to software-controlled robotics systems for smart factory automation. Isra Vision has been driven by passion, commitment, and diversity for over 35 years.