

ITALCARRELLI's latest systems for LGV inloaders

In consistently striving to stay abreast of the changing needs of its customers, Italcarelli has increasingly been studying the performance of handling solutions and automation as the company develops avant-garde, autonomously guided vehicles (AGV) - together with related services.

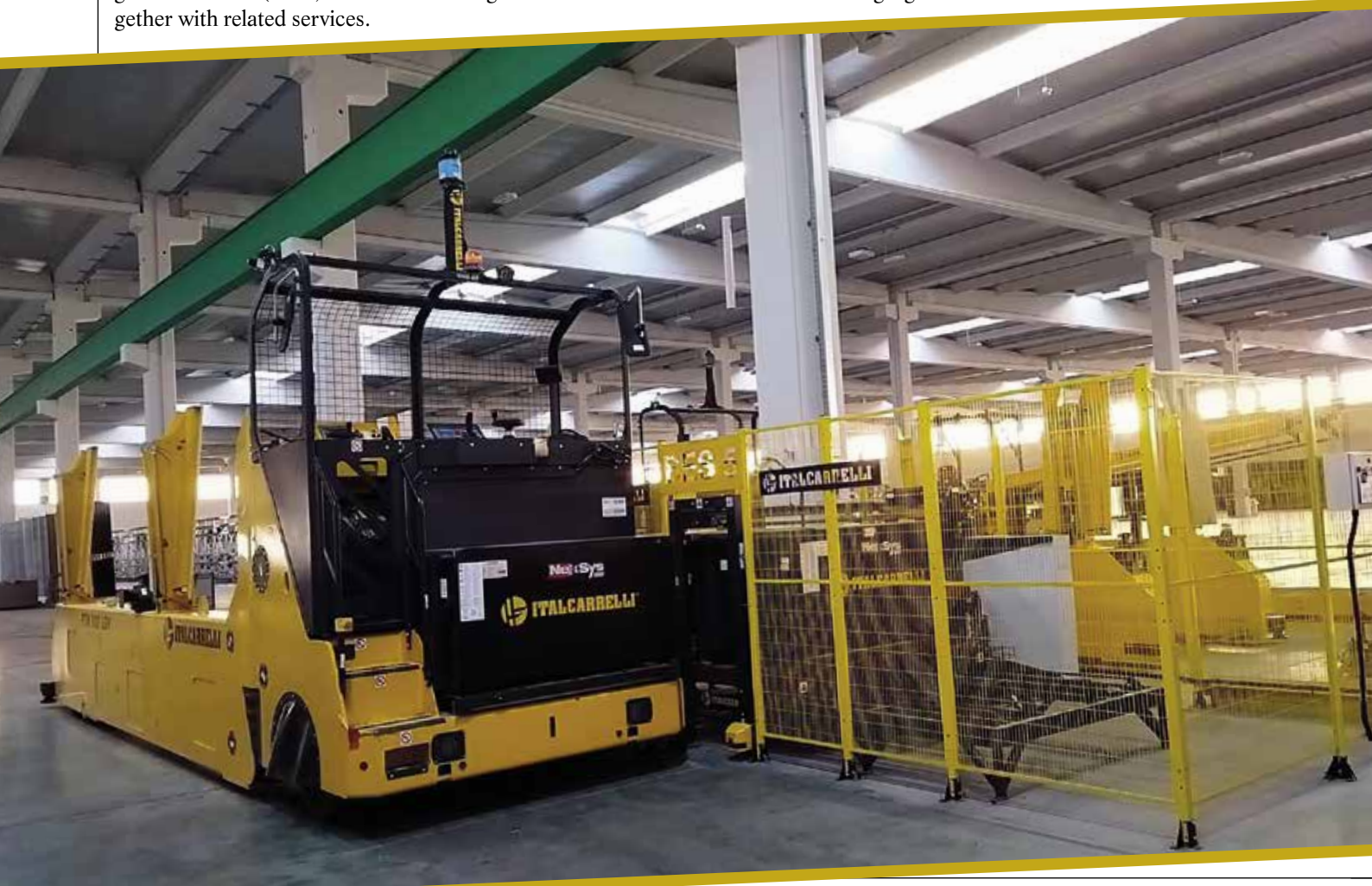
Now, after designing and rendering operational its LGV (Laser Guided Vehicles) transporters all over the world, the company is constantly revolutionising float glass factory logistics with its latest systems - all developed by Italcarelli engineers - for its

LGV PTN inloader series, which functions with no operators aboard: namely the BES, RDS & RIS respectively.

BATTERY EXCHANGE STATION (BES)

The BES system allows automatic recharging and

replacement of the battery aboard the LGV inloader. Here the discharged battery can be replaced automatically and the low battery LGV will automatically move to the BES to swap the battery with a charged one



At Italcarrrelli the glass division and R&D department continue to focus on product innovation as flat glass manufacturing plants transition ever more towards connected systems that are both intelligent and autonomous - with high-performance handling machinery that must yield flexible, efficient logistics results.

Thus, with Italcarrrelli's high safety and quality standards, coupled with its continuous development in robotics, software and services, the company aims to provide its next generation self-propelled transporters - ever striving to pioneer more technologically advanced features.

- an operation that takes about 4 min. Thanks to BES, Italcarrrelli has increased the operation of its LGV machines considerably, with prolonged battery recharging stops no longer necessary. The BES station is also available for standard on-board operator vehicles.

RACK DETECTING SYSTEM (RDS)

The RDS is an innovative localization system that allows for rack type identification as well as load configuration. It can be installed upon both AGVs and manually-guided machines to help operators during handling operations. Various electronic sensors are placed on the inloader to provide all the data: encoder, photocells and ultrasonic sensors. By this technology, the system can detect when the rack is present, if it's an "A" or "L" frame, whether it's empty or loaded and, if so, whether it's loaded



with jumbo or LES glass. Not only. The transporter slows down automatically whilst loading, thereby stopping to avoid hitting the rack at loading.

RACK IDENTIFICATION SYSTEM (RIS)

The vehicle can also be equipped with RIS,

which allows for either barcode scanning or for reading of an RFID tag that bears rack information - then automatically transmitting this data to the Warehouse Management Software, or ERP. In this way, it's possible to know the exact location of both glass and racks at any given time.

Italcarrrelli SpA

ITALCARRELLI
TOP HANDLING SOLUTIONS SINCE 1962

Via Monte Rosa 9
36072 Chiampo (VI) - Italy
Tel.: +39-0444-623393
Fax: +39-0444-420195
E-mail: info@italcarrrelli.eu
www.italcarrrelli.eu