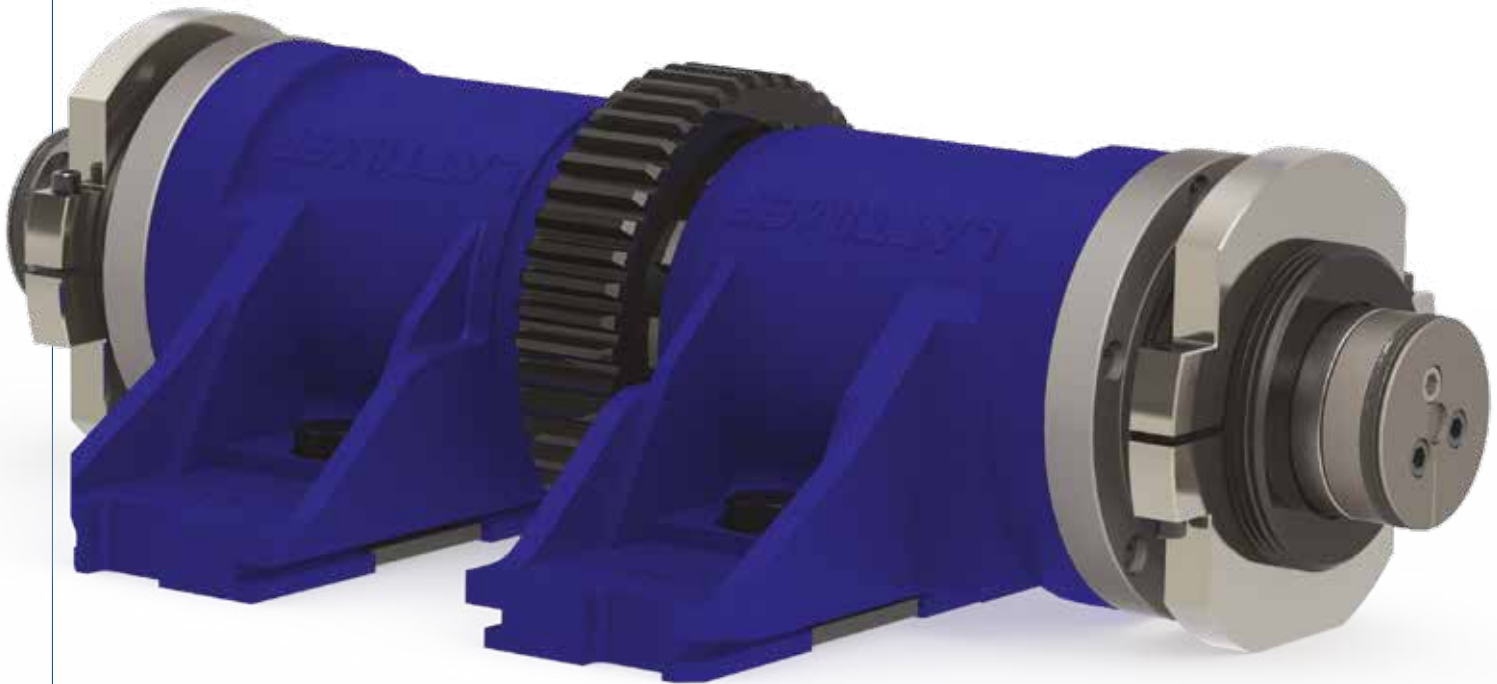


The innovative features of the **LATTIMER®** Neck Ring Mechanism

The renowned LATTIMER® Neck Ring Mechanism is deemed by many to be the industry leader. Indeed several almost invisible –yet key– differences contribute to making it one of the company's key products.





Available in a number of variants to suit a variety of machine types, the robust design of the Lattimer® Neck Ring Mechanism ensures that it can deliver trouble-free operation over many years. A hardened and ground Piston and Rod delivers a closely-toleranced, low backlash opening and closing of the flights that is both synchronised and controlled, delivering minimal backlash to Neckring Arms. Two Heavy duty springs ensure that the flights quickly return to home position once the compressed air is released, ensuring that opening and closing of flights is synchronised.

Roller bearings on the shaft guarantee a smooth, resistance-free rotation during inversion of the Neck Ring Arms - all coupled with a simplified design for ease of maintenance.

CONSPICUOUS EXCELLENCE

Using three cap-head screws in the end cap in place of the traditional taper pin allows for maintenance to be carried out with precision and efficiency. To reduce wear on the



end caps and bushings during operation, a radial ball bearing is used instead of a standard one - a contributing factor to what's commonly acknowledged as an impressively long running life of the Lattimer Neck Ring Mechanism.

Not only the mechanism's lower backlash and high build quality delivers production consistency. The hardness, surface finish and accuracy of the fit between shaft and flights reduces wear - thereby facilitating a significant reduction in container defects.

BENEFITS

- Interchangeable with existing mechanisms without any requirement for conversion kits increase in size to fill space.
- Extended service life
- Faster opening and closing speeds
- Enhanced repeatability
- Lower backlash
- Reduced maintenance downtime

PRECISION PRODUCTS



During the assembly process every mechanism is tested on the company's dedicated test facility, which ensures that each one falls within Lattimer's demanding specification.

Lattimer piston and Rods are heat treated several times during the manufacturing process and once all machining and treatments are completed they are ground on all surfaces. This guarantees correct sizing, accuracy of fit with the flights as well as surface finish - all critical for a controlled, smooth operation of the mechanism.

A quad seal is used on the end cap to reduce the loss of compressed air and lubrication during operation. ■

ABOUT LATTIMER

Since its founding, Lattimer's singular target has remained that of seeking to lead the way in the design and manufacture of IS variable equipment. Customers will now typically associate the company with high quality products as it exhibits every attention to detail as necessitated by today's demand for excellence in the exacting world of Glass Container manufacture. Lattimer strives to exceed expectations while being fully committed to its customers - manufacturing and supplying products that aim to set standards in the glass container forming industry as it concentrates on precision and the highest quality. Lattimer brings a wealth of knowledge and experience to its design and manufacture of both standard and bespoke IS variable equipment - supplying mechanisms and components to plants in all parts of the world.



LATTIMER

79-83 Shakespeare Street
Southport - Merseyside
PR8 5AP - UNITED KINGDOM
Tel: +44 (0) 1704 535040
Fax: +44 (0) 1704 541046
E-mail: sales@lattimer.com

www.lattimer.com

