

GLASS CONTAINERS

Advanced HEYE evolution is amplified in SmartLine 2 inspection machine

As top marks continue to be awarded to HEYE International's SmartLine 2 for its Ranger 2 camera-based check inspection system, its starwheel inspection also ranks very highly among customers - successfully combining speed, reliability and flexibility to deliver accurate results in special operations such as mini-ware and non-round containers.

Ranger 2



The latest generation of Heye International's starwheel inspection machine series, SmartLine 2 has been developed and manufactured at the company's dedicated Cold End Centre in Nienburg. This glass container inspection equipment can be configured in several different ways, with up to six available inspection stations. Employing a team of experts and featuring a modern production layout, the Nienburg facility's proximity to several German glass plants affords every opportunity to undertake both essential testing work and collaboration - all with due thoroughness.

CAMERA CHECK INSPECTION BY RANGER 2

Equipped with Ranger 2, an excellent camera-based check inspection system, customers all over the world have confirmed the SmartLine 2 robustness and reliability. Proven in multiple cases, Heye's Ranger 2 provides an extensive detection range in the finish, shoulder and bottom area. It's also very well-suited to high-speed pharmaceutical mini-ware inspection to up to 400 bottles per minute. With this evolution the system can fulfill all customer requirements to container sizes and shapes.

HOW RANGER 2 WORKS

Every container produced must be considered as a unique object with an individual shape and reflections resulting from this and every concept of a crack test must consider this. Therefore, the Ranger 2 uses the concept of "Intelligent Cloud Masking", which makes any kind of "teaching" superfluous after a job change.

Assuming that each container is unique, the Ranger 2 inspects each container for itself and sets one mask for each single container. Therefore, each container is its own reference and has no negative influence on the following ones. So the zones are subject inspection of



high dynamics and can immediately adapt to changes that occur during production.

NON-ROUND - HEYE'S CORE COMPETENCE

Container shapes, which differ from the standard round container, comprise one of the most common tasks in the glass container inspection industry. Heye masters these 'non-round' containers superbly. Here the range of inspectable container sizes and shapes is top class, with inspection being possible with almost all imaginable shapes - no matter if they are angular, oval or round. With this extensive range of container sizes and forms, the SmartLine 2 offers a high degree of flexibility and is therefore as suitable for customers with a wide scope of different products and many job changes as it is for the high-speed production of long runs.

IMPROVED JOB CHANGE TIMES

The application of servo technology ensures a high degree of flexibility. Fast and easy changes to an item's indexing positions and optimal use of the servo

torque for up to four rotation stations are possible. Optimised motion sequences allow faster reactions to changing process parameters. The equipment's innovative design and large, easy-to-open hood provides for greater working space between inspection stations. Job changes become much easier. Here maximum article height accommodated is up to 400mm, with angular, oval and round containers processed. Thanks to the servo-driven starwheel, indexing positions from six to 48 are possible.

STATE-OF-THE-ART USER INTERFACE

The sophisticated design of the graphical user interface of SmartLine 2 has been conceptualised thanks to easy, fast handling within the plant - allowing for operational excellence. In orienting development the approach comes directly from Heye's customers. The two-click-management, by which the vast majority of functions can be accessed via a single sub-menu, is only one of many advantages besides smart configuration and a comprehensive overview over

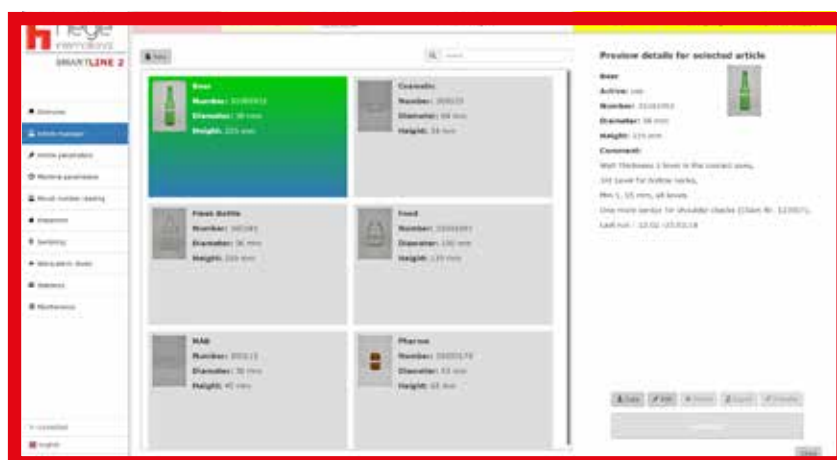
GLASS CONTAINERS



all the statistics an operator needs to ensure easy-to-use handling.

POSITIVE FEEDBACK

Feedback generated from Heye International customers confirms the robustness and reliability of SmartLine equipment. The German engineered design and drive system in particular have been highlighted for their robust design while the control system continues to be praised for its reliable operation. ■



Job history

ABOUT HEYE INTERNATIONAL

Based at Obernkirchen, Germany, Heye International GmbH is one of the international glass container industry's foremost suppliers of production technology, high performance equipment and production know-how. Its mechanical engineering has set industry standards for more than six decades. Extensive industry expertise combined with the positive attitude and enthusiasm of Heye International employees is mirrored by the company motto 'We are Glass People'. Heye's three sub-brands HiPERFORM, HiSHIELD and HiTRUST form the company's Smart Plant portfolio - addressing the glass industry's hot end, cold end and service requirements respectively.

heyeye
international

**HEYE
INTERNATIONAL
GmbH**

Lohplatz 1
31683 Obernkirchen - Germany
Tel.: +49-5724-26-452
Fax: +49-5724-26-229
E-mail: marketing@heyeye-international.com
www.heyeye-international.com

DAILY NEWS

Tuesday, February 14, 2023



Glaston invests in reducing its carbon footprint



sedak relies on green energy



New Designs for Trosifol® and SentryGlas® bird-friendly solutions



AGC glazing gives iconic Tunis landmark a sparkling makeover



NSG Group: Quarter 3 results of Financial Year ending March 2023



Company news
RCN Solutions at Viridian Glass, Australia
13 February 2023



Company news
Guardian gets Bronze level Cradle to Cradle re-certification in Europe
13 February 2023



Company news
Glass Futures announces the appointment of two new Board Members
13 February 2023

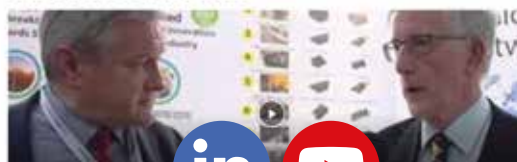
glassOnline

The World's Leading Glass Industry Website



Customers involve IOCCO in feasibility studies for whole car glass sets

Among IOCCO's contribution in the manufacture of systems for the air extraction during the lamination of windscreen, laminated sideights and sunroofs is the notable improvement for both concept and fabrication of vacuum bag furnaces...



GlassOnline.com offers a full multi-media experience across channels and platforms

DAILY NEWS

Daily news from around the world of glass: industry, economy and finance, management, projects, systems, innovations, products, events, etc.

DAILY NEWSLETTER

Over 7,600 registered users receive the newsletter - with a worldwide news service - five days a week.

VIDEO INTERVIEW

GlassOnline, Glass Industry Network (Linkedin page) and our chanel Youtube, will host and promote your company videos and video interviews to a large professional audience

FOCUS ON

A service dedicated to companies that want to publish articles in real time on case histories, special company events and celebrations, business agreements and production innovations, etc.

OUR PUBLICATIONS

All our publications are available free-of-charge in digital desktop format, iPhone / iPad and Android mobile systems or in pdf format