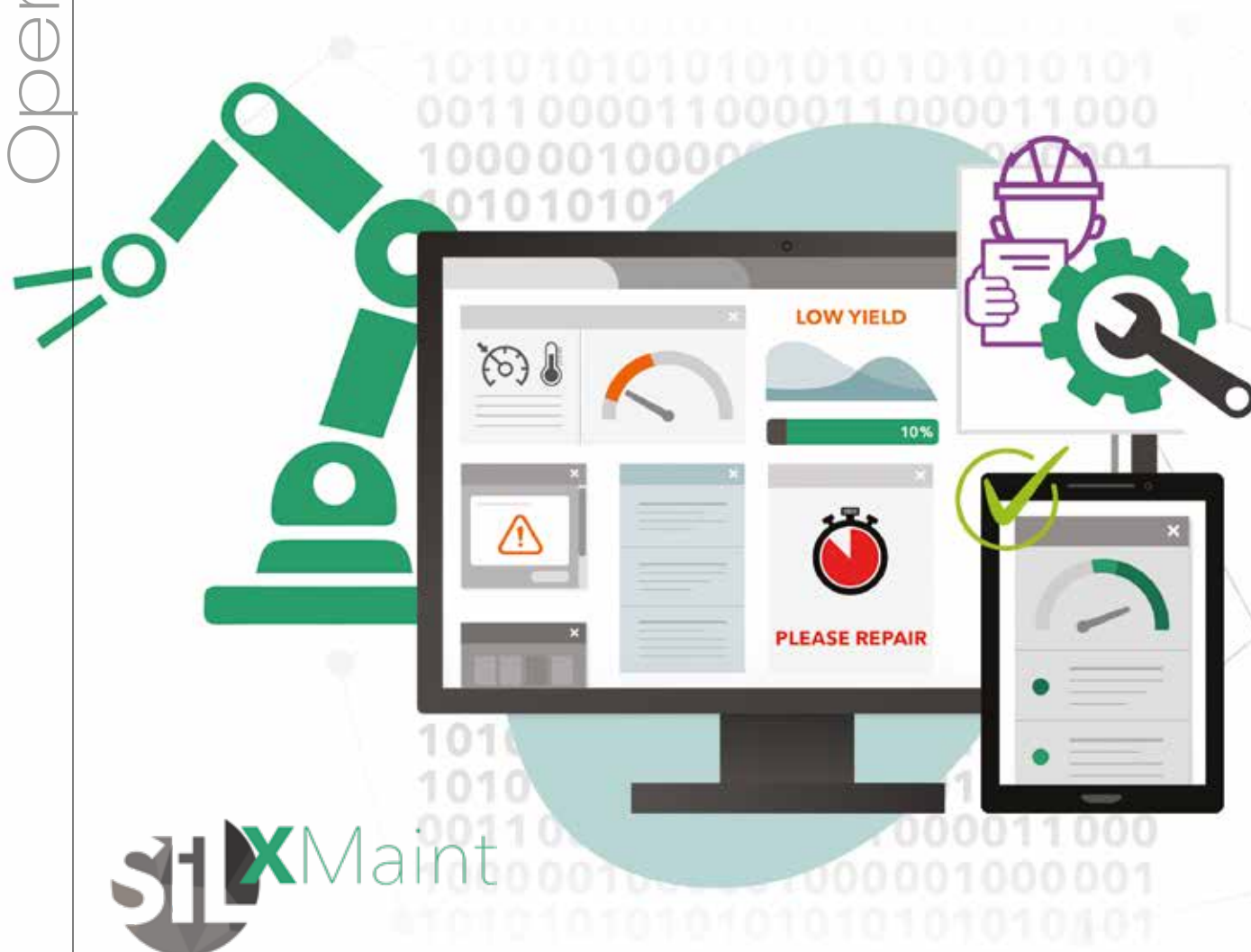


SPECIAL FEATURES

Operational efficiency

Enter **VERTECH's**
SILXMaint: predictive
maintenance
for optimised
performance



VERTECH's SIL, a comprehensive Manufacturing Execution System for glassmakers, recently introduced SILXMaint for predictive maintenance. As module ensuring real-time monitoring of mechanical parts, SILXMaint optimizes budgets while providing insights for informed decisions – thereby enhancing overall glass manufacturing performance.

For almost 30 years, leading industry player Vertech' has been answering the unmet needs of today's glassmakers with a complete production management system called SIL. A highly comprehensive M.E.S. (Manufacturing Execution System), SIL gathers plant data from raw materials to palletizer - offering a 360° view of the glass manufacturing plant thanks to six different modules. Here's where Vertech' shows the benefits of its latest SILXMaint modules.

INTRODUCING SILXMaint

A truly efficient tool, SILXMaint provides real time status for such mechanical parts as arms and pushers. In this way it contains all necessary information related to the usage of these parts. It displays all the productions in progress and in coming, so the operator will be able to secure them - ensuring they have

the parts in order to face any critical issue.

In any glass factory the maintenance budget is an important expenditure item, with IS machine part management coming as particularly complex and critical. Based on commercial information, replenishment of parts can be easily scheduled with SILXMaint. The plant will secure the availability of parts needed for each production - assigning them properly. Indeed the operator will organize reparation and dimensional controls based on the production forecasts and availability of parts. Indeed for new job order preparation, SILXMaint will allow for time saving.

DATA OPTIMISATION

Displayed upon dashboards, data offers reporting tools to users that are both real-time and historical. Also, production can meet its

full capacity thanks to optimized maintenance operations. Here SILXMaint will transform available data into helpful insights that lead to informed decisions as well as better business results. The new module enables the identification of maintenance costs associated with each production - all to ensure glassmakers keep their maintenance costs under control. ■

Vertech'
VERTECH'

Campus Saone Or
11, rue Alfred Kastler
71100 Chalon-sur-Saône, FRANCE
Tel : +33 385 981 919
vertechsales@vertech.fr
<https://vertech.eu>

