

# CLOSE THE GLASS LOOP reports record collected glass volume

## **P**OSITIVE TRENDS AMID RISING DEMAND

Significantly, the amount of glass collected has kept pace with the substantial 4.5 percent increase in glass packaging introduced to the market. This balance highlights a positive trend in glass collection efforts across Europe, suggesting that as demand for glass packaging grows, so does the efficiency and effectiveness of collection systems. Speaking on behalf of Close the Glass Loop partners,

Secretary General of FEVE (the European Container Glass Federation) Adeline Farrelly said recently: “More glass packaging was collected in 2022 than ever before, reaching a record level of 12.4 million tonnes, representing an increase of about 542 000 tonnes over the previous year. The increase in volumes of collected glass demonstrates the resilience and commitment of the glass packaging value chain to increase the availability of post-consumer glass for

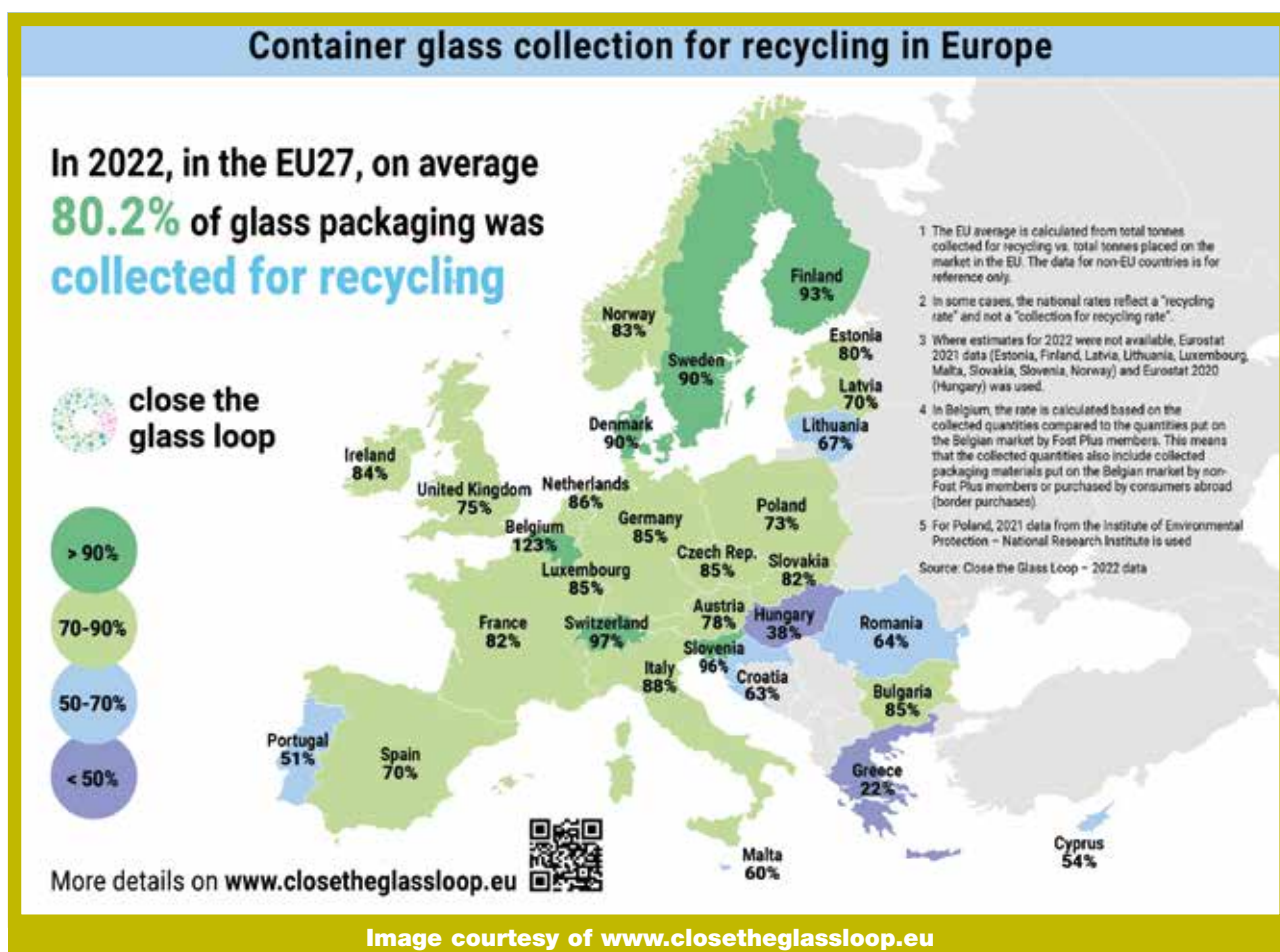
the manufacturing of new glass bottles and jars.”

## **TOWARDS THE 2030 COLLECTION OBJECTIVE**

To achieve the ambitious target of a 90 percent collection rate by 2030, it is crucial to further advance initiatives focused on the separate collection of glass packaging from both households and the hospitality sector. Additionally, investments aimed at maximizing glass recycling outputs, particularly towards a closed-



The European Union's glass value chain continues to demonstrate remarkable stability, maintaining an impressive 80.2 percent glass packaging collection rate, coupled with a record volume of collected glass. Recent data unveiled by CLOSE THE GLASS LOOP reveals that in 2022, the EU's average collection for recycling rate of glass packaging remained consistent at 80.2 percent.



loop system, must be supported. The urgency of these measures cannot be overstated; they are vital for ensuring a sustainable and efficient glass collection and recycling framework throughout Europe. Secretary General of FERVER (European Federation of Glass Recyclers) Olivier Deweerdt, likewise speaking on behalf of

Close the Glass Loop partners, recently said: "Close the Glass Loop national Platforms play a pivotal role in achieving the 90 percent collection target. The exchange of best practices and support for projects and activities at the national level are vital for increasing and improving glass collection for recycling. This will be reflected in our

upcoming 2025-2030 Close the Glass Loop Action Plan."

### MOBILIZING NATIONAL PLATFORMS AND ACTION PLANS

The activation of National Platforms and the implementation of National Action Plans are essential to stimulate the necessary actions for boost-





ing glass collection and recycling rates in each EU Member State. This year, the network has been strengthened with the inclusion of Romania and the Netherlands as new National Platforms. Their participation enhances our capacity to execute tailored strategies at the national level, addressing specific challenges and opportunities.

#### EXPANDING PARTNERSHIPS FOR A SUSTAINABLE FUTURE

Close the Glass Loop is committed to fostering more partnerships across Europe to bolster glass collection and recycling efforts. By expanding our collaborative

network, we aim to develop and implement effective, localized solutions that contribute to the overarching goal of a sustainable and efficient glass recycling system across the continent.

#### CONCLUSION

The steady collection rate and increasing volumes of recycled glass underscore the EU's robust efforts in glass packaging recycling. However, to meet future targets, ongoing promotion of separate collection initiatives and strategic investments are necessary. With the support of national platforms and a focus on tailored national strategies, the EU is well-

positioned to enhance its glass recycling capabilities and achieve its 2030 objectives. ■



#### CLOSE THE GLASS LOOP

c/o The European Container  
Glass Federation - FEVE  
Avenue Louise 89 - Bte 4  
1050 Brussels - BELGIUM  
Tel: +32-0-48682-3936  
E-mail: [info@closetheglassloop.eu](mailto:info@closetheglassloop.eu)  
<https://closetheglassloop.eu>